



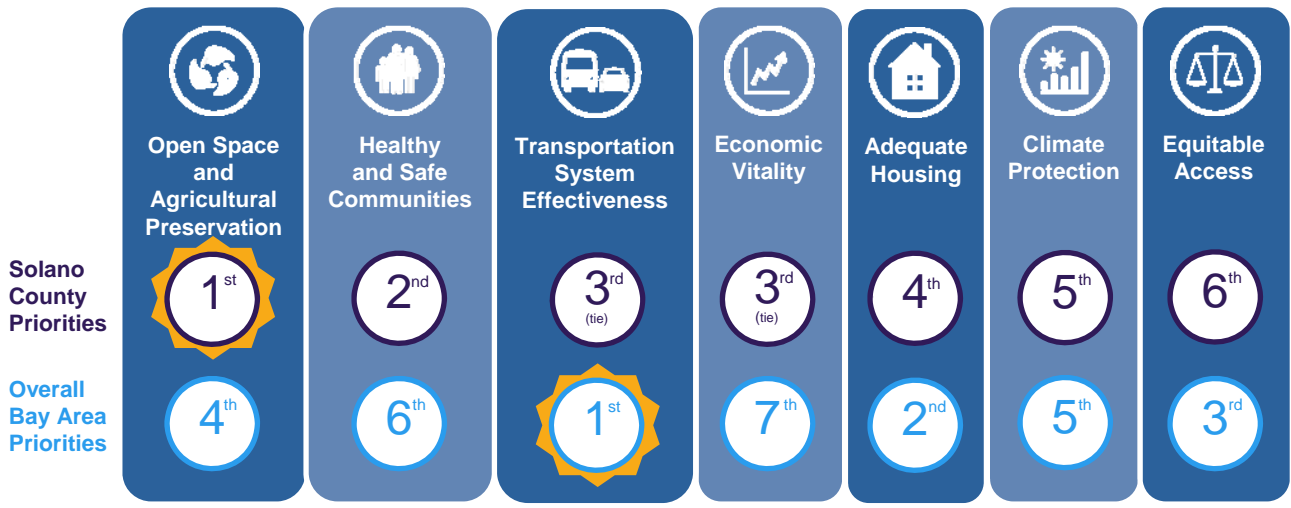
Plan Bay Area Spring 2015 Open House Summary

<p>Thursday, May 7, 2015 6 pm to 8 pm</p>	<p>Hilton Garden Inn 2200 Gateway Court Fairfield</p>	<p>Approximate Attendance 30</p>	
--	--	---	--



Goals and Targets Station Feedback

At the Goals and Targets Station, participants received information about the current goals and targets for Plan Bay Area, as well as the process underway to update them. Participants were asked to select their top three personal priorities from the list of current goals and targets for Plan Bay Area, and to post their other ideas on an adjoining additional board.



Below is a sampling of the comments that were submitted at the Solano County open house. Visit PlanBayArea.org to view the complete list.

Is there anything missing from these goals?

- Focus on the drought impact on air quality and health
- Develop connectivity of bike/ped projects to transportation hubs
- Affordable and low-income housing
- Stabilize population

What are the biggest challenges facing your community?



- Affordable housing
- Blighted neighborhoods
- Lack of quality jobs
- Jobs and housing imbalance
- Urban sprawl
- Population growth

What are your ideas for solving these challenges?

- Integrate affordable housing into development
- Develop small commercial centers among housing developments
- Stabilize population and focus on existing residents
- Dedicate childcare facilities



Transportation Station Feedback

The Transportation Station included displays about currently planned local and regional transportation projects (highways, public transit, bicycle/pedestrian, local road improvements, etc.). On an accompanying board, participants were asked to post ideas for new projects, then to share their biggest transportation challenges and offer solutions for improving their trips.

What projects are missing? What would make it easier for you to get where you need to go?



- Repair of old roads
- Longer hours for regional transit
- More ferries
- More buses (and frequency)

What are the biggest transportation challenges in your town? In the Bay Area? What would make it better?

- Too much congestion on roads
- Need to stabilize population
- Can't get anywhere easily via public transit
- Old roads need to be fixed before new projects are built
- More density would make transit more feasible



Looking Ahead Station Feedback

At the Looking Ahead Station, participants received information on how ABAG develops population and economy forecasts, as well as how past projections compared to actual numbers. Participants were asked to share their feedback on two key questions:

What concerns you about the future of your community?



- Homelessness
- Lack of affordable housing
- Water resources and availability
- Homelessness
- Too much population growth and not enough jobs
- Housing and public transportation for seniors

What possibilities most excite you?

- More emphasis on bike transportation infrastructure
- Green economy boom
- Environmental leaders
- Funding for Priority Conservation Areas, not just Priority Development Areas