



PLAN BAY AREA 2050+



ASSOCIATION OF BAY AREA GOVERNMENTS
METROPOLITAN TRANSPORTATION COMMISSION

Plan Bay Area 2050+: Draft Blueprint Workshop

Partner & Stakeholder Technical Workshop #2

September 7, 2023

Today's Agenda

Welcome (5 minutes)

Presentation: Overview of Plan Bay Area 2050+ (15 minutes)

Clarifying Questions (5 minutes)

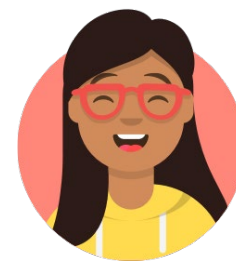
Breakout Groups & Report Back — The “New Normal” (25 minutes)

Presentation: Proposed Strategy Updates for Plan Bay Area 2050+ Draft Blueprint (15 minutes)

Q&A (10 minutes)

Breakout Groups & Report Back – Strategy Updates (40 minutes)

Closing & Next Steps (5 minutes)



Logistics for Today's Virtual Workshop

- There will be an opportunity to **ask questions** following each of the presentations by staff.
 - Please use the “Raise Hand” feature to ask a question.
 - Alternatively, you can enter questions into the chat box.
- During the breakout groups, we ask that you **allow everyone a chance to speak** and that you engage in active listening.
- Please **be respectful** of each other's opinions and comments.
- There will be an opportunity to **report back** after each breakout session.





PLAN BAY AREA 2050 +



ASSOCIATION OF BAY AREA GOVERNMENTS
METROPOLITAN TRANSPORTATION COMMISSION

Plan Bay Area: Refresher and Overview

Where We've Been....

Fourth Iteration of an Integrated Regional Plan

MTC/ABAG are embarking on the fourth iteration of the nine-county Bay Area's long-range regional plan since the adoption of SB 375 (Steinberg, Statutes of 2008).



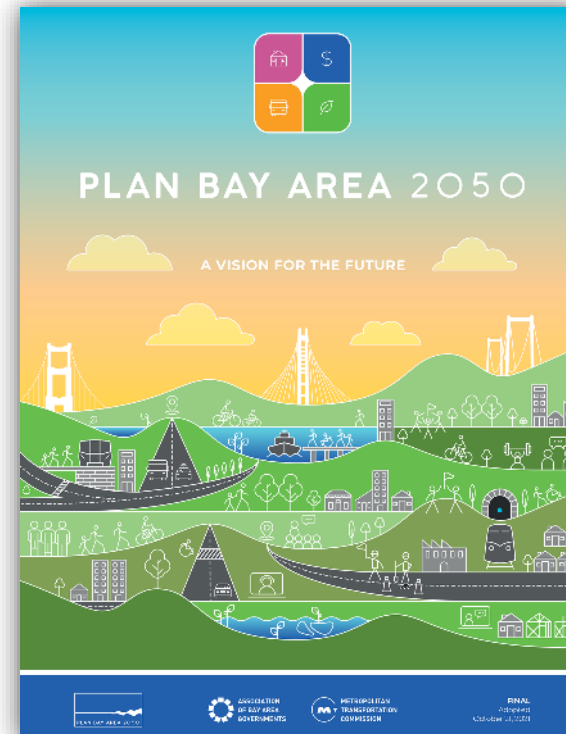
PLAN BAY AREA

Adopted: 2013



PLAN BAY AREA 2040

Adopted: 2017



PLAN BAY AREA 2050

Adopted: 2021



PLAN BAY AREA 2050+

Anticipated Adoption: 2025

Refresher: Federal and State Requirements

Among other federal and state requirements, Plan Bay Area must:

**Be Updated Every
Four Years**

**Coordinate Long-
Range Transportation,
Housing and Land Use
Planning**

**Reduce Per-Capita
Greenhouse Gas
(GHG) Emissions from
Light-Duty Vehicles**

**Include a Robust
Public Process, in
Collaboration with
Key Partners**

**Contain a Fiscally-
Constrained
Transportation
Element**

**Receive Approval
from Federal and
State Regulators,
including CARB**

Plan Bay Area 2050: The First Bay Area Regional Plan to...



Pivot from predicting the future to exploring strategies in uncertain futures



Lead with equity in all strategies from square one



Pursue innovative public engagement, from mobile games to “pop-up” events



Demonstrate what a unified staff can deliver for both boards



Lay out a roadmap showing “what it would take” to tackle the intractable housing crisis



Integrate bold new strategies from all-lane road pricing to lower speed limits



Sketch out an initial vision to mitigate near-term sea level rise impacts along the entire Bay & Pacific Coast



Identify specific near-term implementation actions for all 35 strategies

Plan Bay Area 2050: Engagement with Partners and Communities

160+

Public meetings featuring discussion of Horizon & Plan Bay Area 2050

150+

Public events including in-person & virtual workshops, pop-up events, focus groups

140+

Stakeholder events including RAWG and REWG meetings, workshops, and webinars

234,000+

Public comments received

23,000+

Participants in planning process

60%+

of events/activities targeted Equity Priority Communities or other underserved groups



Plan Bay Area Vision, Guiding Principles, and Elements

VISION & GUIDING PRINCIPLES

*Ensure by the year 2050 that the Bay Area is **affordable**, **connected**, **diverse**, **healthy** and **vibrant** for all.*

FOUR ELEMENTS OF THE PLAN



- **Transportation** Strategies
- **Housing** Geographies & Strategies
- **Economic** Geographies & Strategies
- **Environmental** Strategies

Plan Bay Area Themes and Strategies



**Maintain and Optimize
the Existing System**



**Create Healthy and Safe
Streets**



**Build a Next-Generation
Transit Network**



**Protect and Preserve
Affordable Housing**



**Spur Housing Production
at All Income Levels**



**Create Inclusive
Communities**

Plan Bay Area 2050

35 Adopted Strategies & 11 Themes



**Improve Economic
Mobility**



**Shift the Location of
Jobs**



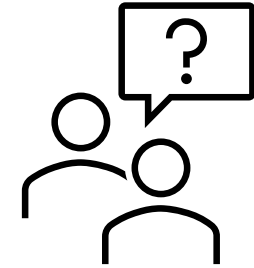
**Reduce Risks from
Hazards**



**Expand Access to Parks
and Open Space**



Reduce Climate Emissions



What is a strategy?

A strategy is either a **public policy or set of investments** that can be implemented in the Bay Area over the next 25 years at the local, regional, or state levels; **a strategy is not a near-term action or legislative proposal.**

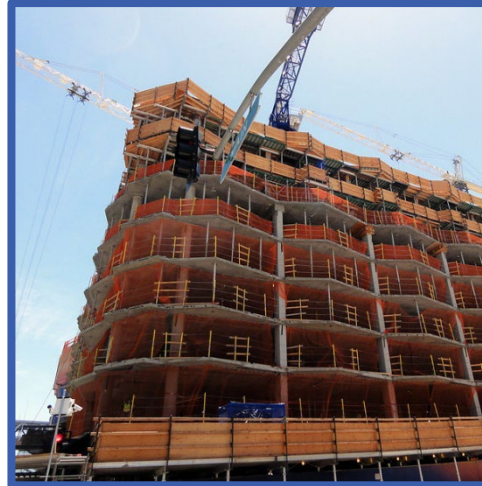
For more detailed descriptions of Plan Bay Area 2050's adopted strategies, please see the attachment included in your meeting packet.

Long-Range Planning in the COVID-19 Era

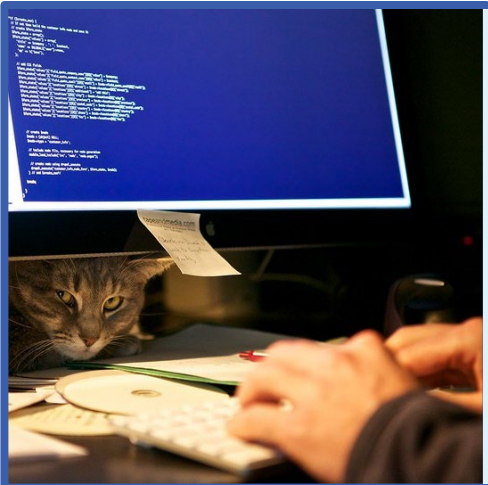
As a long-range plan developed during the COVID-19 pandemic, Plan Bay Area 2050 was shaped by and responded to the pandemic's unique challenges in several ways. Grounding the plan more firmly in the post-COVID reality – where feasible and supported by data – will be a key focus area for the plan update.



Integrated near-term slowdowns in revenue generation and population growth to reflect the 2020 economic recession



Refreshed strategies with expanded emphasis on high-speed internet access and sustainable commute targets



Adjusted work-from-home growth projections, with accelerated regional action by major employers to incentivize alternatives to driving



Doubled-down on resilience focus to reduce regional risk in the face of other future disasters, including sea level rise, wildfires & earthquakes

PLAN BAY AREA 2050+



ASSOCIATION OF BAY AREA GOVERNMENTS
METROPOLITAN TRANSPORTATION COMMISSION

Plan Bay Area 2050+: Schedule, Scope and Policy Context

Where We Are...

I
BELONG
IN THIS
PLACE

SJDOWNTOWN.COM

FIND YOUR PLACE

BELONG

ELEV8
NIGHTCLUB

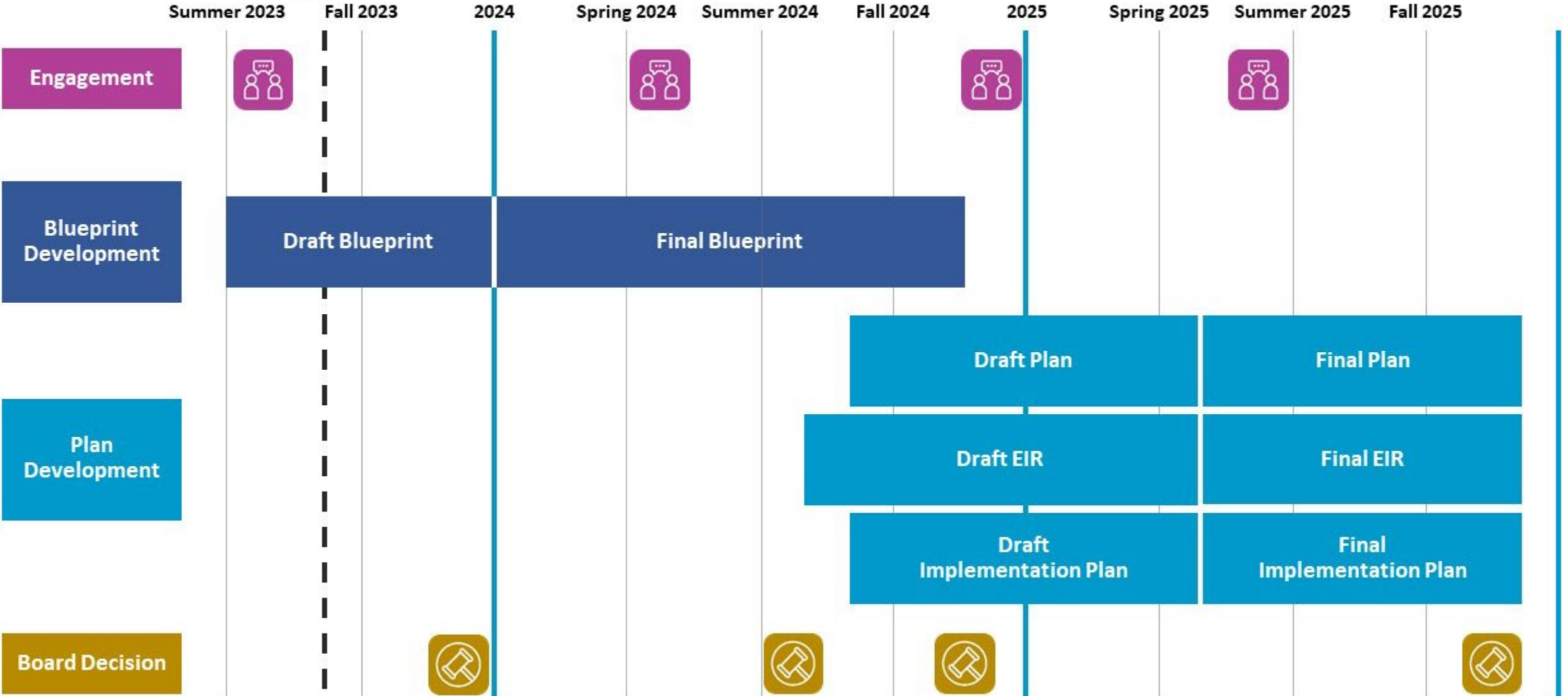
ELEV8
NIGHTCLUB

BAY
STREET

Bus Stop
68

Plan Bay Area 2050+: Schedule

We are here



Plan Bay Area 2050+: Summer 2023 Public Engagement

MTC and ABAG have been seeking public input on Plan Bay Area 2050+ as part of a first round of public engagement over summer 2023. Key activities have included:

- **15 pop-up workshops**
- **A survey** available in English, Chinese, Spanish and Vietnamese
- **Community-Based Organization (CBO) engagement**
- **Digital promotion**
- **Tribal outreach**

Findings from this first round of public engagement will be shared in November with MTC/ABAG committees.



Photo: FlorHaus

Plan Bay Area 2050+ and Transit 2050+

- In December 2022, MTC/ABAG staff proposed advancing two long-range planning efforts in parallel:
 - *Plan Bay Area 2050+*: A **limited and focused update** to the solid foundation of Plan Bay Area 2050, with no required Regional Housing Needs Allocation (RHNA) process
 - *Transit 2050+*: A **service-oriented, fiscally-constrained transit network plan** for the nine-county Bay Area
- Plan Bay Area 2050 envisioned a robust, connected transit network, but the rapid change in commute patterns and reduction in anticipated revenue requires a comprehensive update via Transit 2050+
- **The primary focus of today's workshop is on the 29 strategies being updated via the Plan Bay Area 2050+ Draft Blueprint process**; however, the Transit 2050+ team is available to take input and answer questions

Plan Bay Area 2050+:

Responsible for targeted refinements to the plan's 29 strategies unrelated to transit

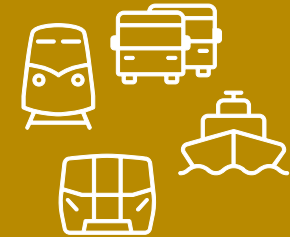
Plan Bay
Area 2050+



Transit 2050+:

Responsible for a comprehensive reimagining of the plan's six transit-oriented strategies

Transit
2050+

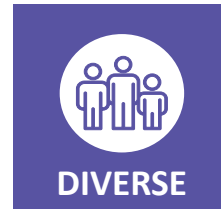


Plan Bay Area 2050+: Scope

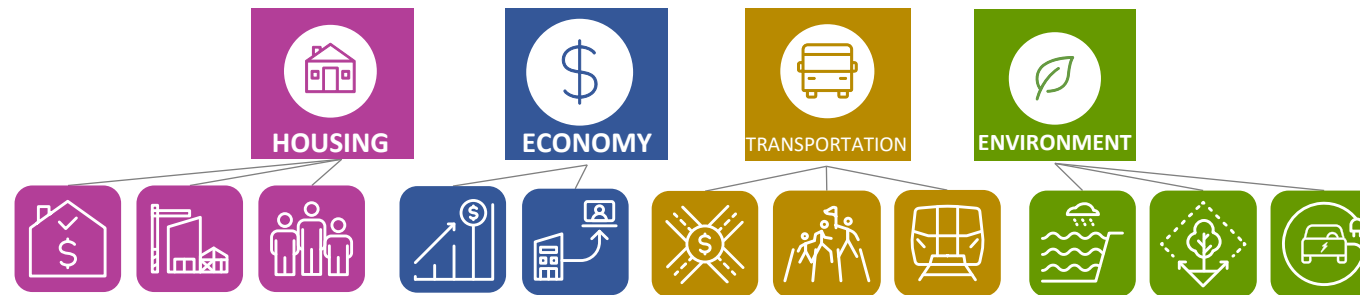
In addition to addressing all federal and state planning requirements,

Plan Bay Area 2050+ will:

Leverage the vision and guiding principles established in Plan Bay Area 2050



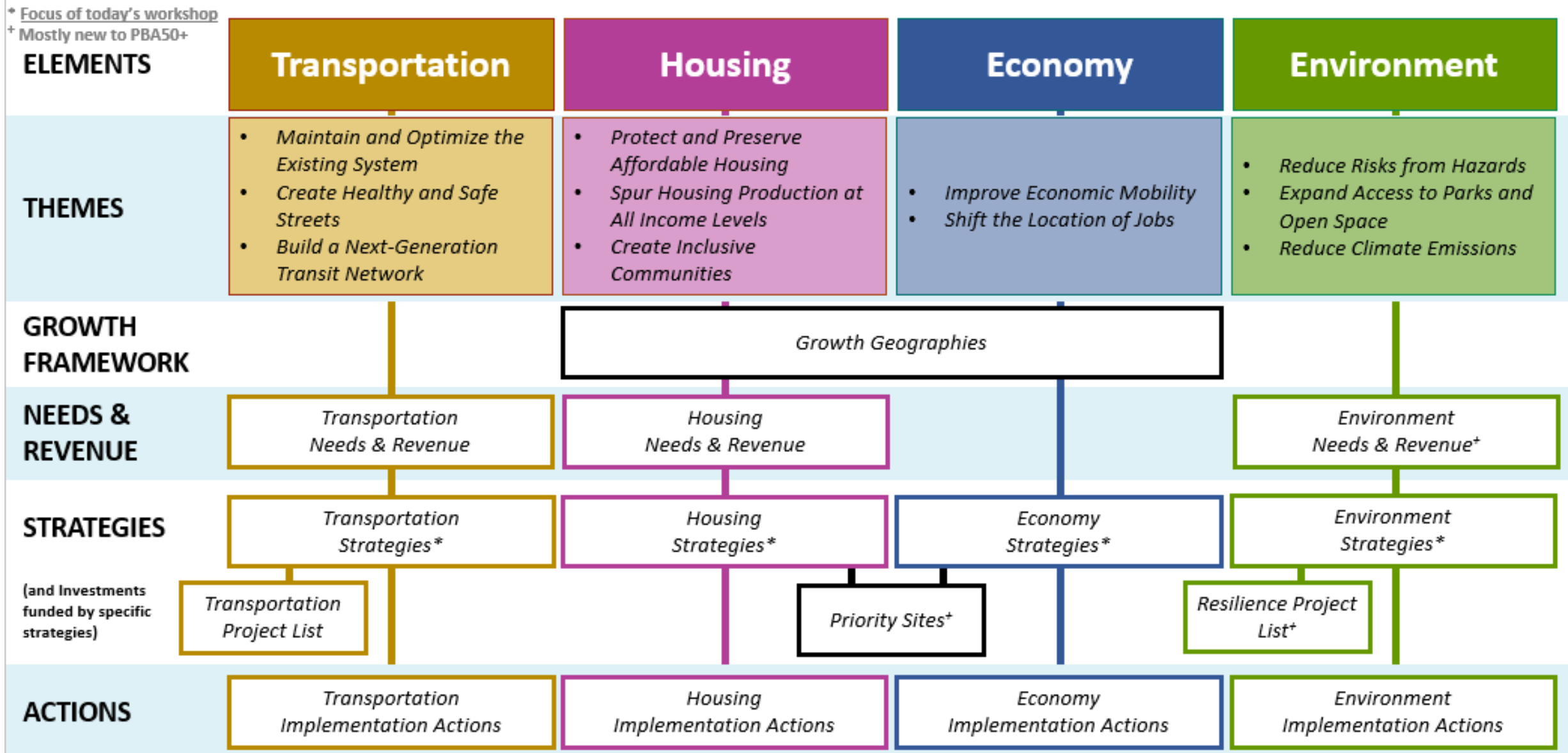
Maintain the long-range plan's existing strategic framework and organization



Focus on three core priorities: education, updated assumptions and implementation



Plan Bay Area 2050+: How Is It Organized?



Nesting Projects within Plan Bay Area Strategies

Transportation Project List



Strategy Updates for
Draft Blueprint Analysis

The **Draft Blueprint** will only include existing and/or committed projects (e.g., Caltrain Electrification).

Strategy Finalization for **Final Blueprint** Analysis



Final Transportation Project List



Project Performance Assessment under Transit 2050+ umbrella

Certain strategies consist of projects and programs that are detailed in the **Transportation Project List**, which will be developed with key partners and through the Transit 2050+ process.

Anticipated Timeline: Summer 2023 through Spring 2024

Resilience Projects List

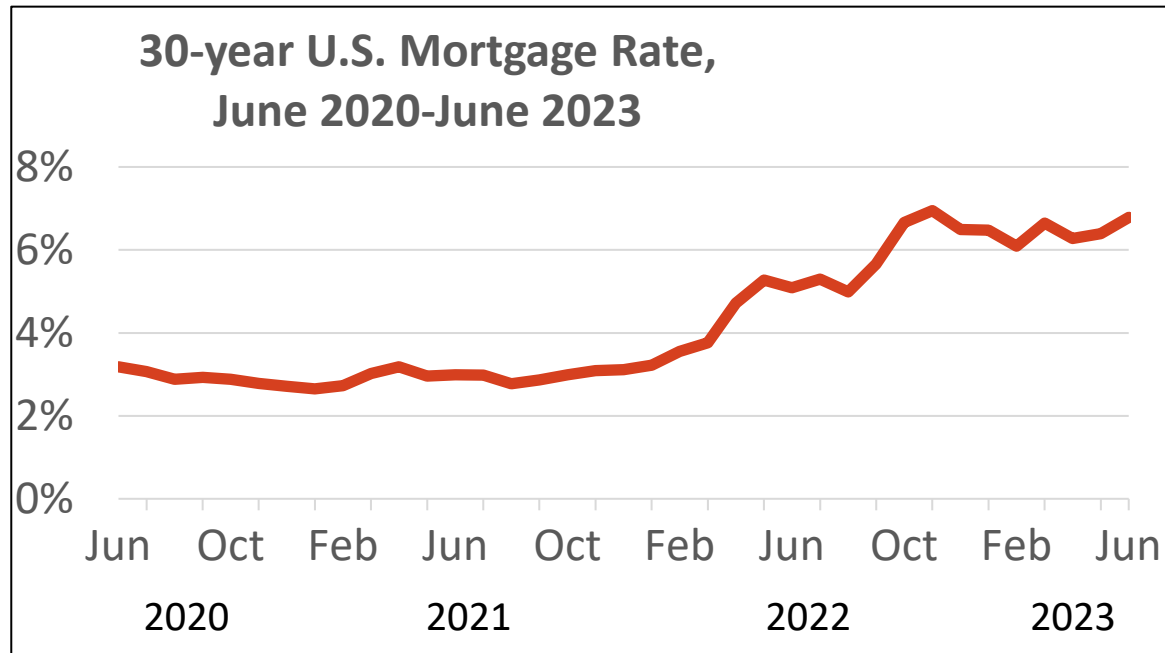
- Plan Bay Area 2050+ will also include for the first time a Resilience Projects List as a component of the Environment Element.
- These projects will build upon the resilience inventory created by the Sea Level Rise Adaptation Funding and Investment Framework, a project co-led by MTC and BCDC.
- Resilience projects that address other hazards, such as seismic or wildfire mitigation, may also be considered.
- MTC/ABAG will coordinate with local jurisdiction staff to identify resilience projects.

Anticipated Timeline:

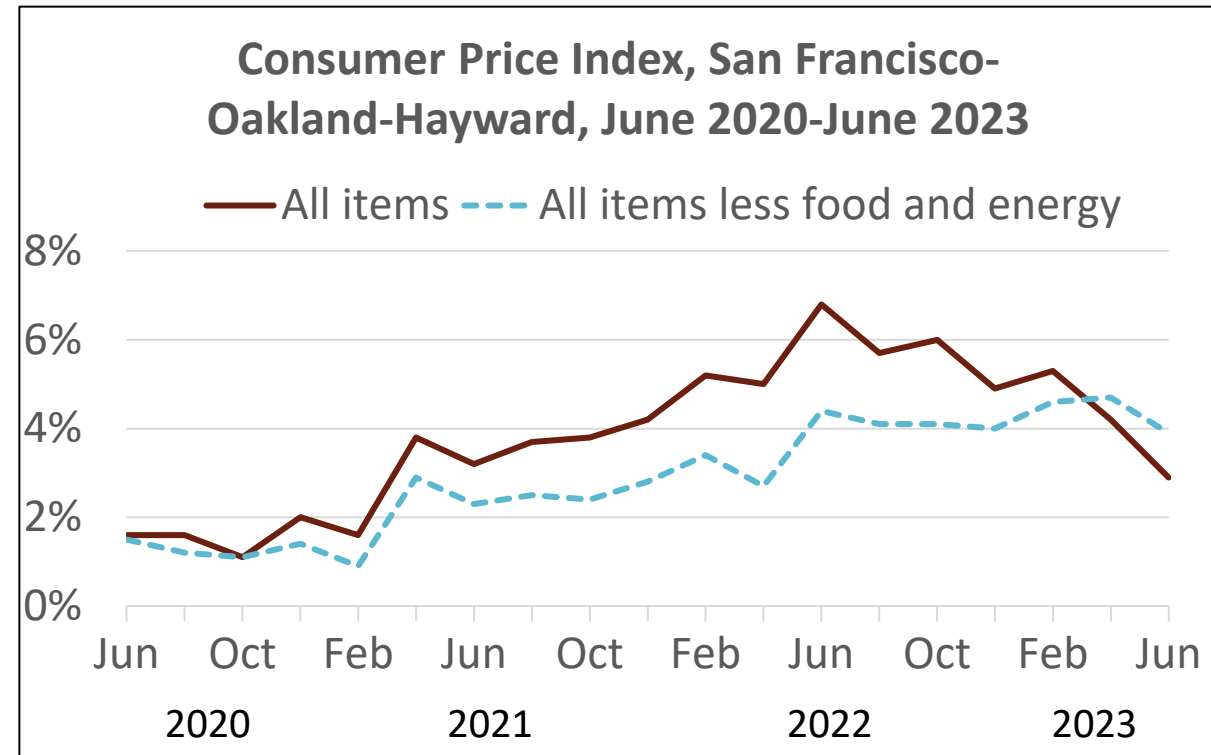
Summer 2023 through Spring 2024

Plan Bay Area 2050+ Policy Context: Affordable Guiding Principle

Both mortgage rates and inflation hit multi-decade highs, although inflation levels are now moderating.



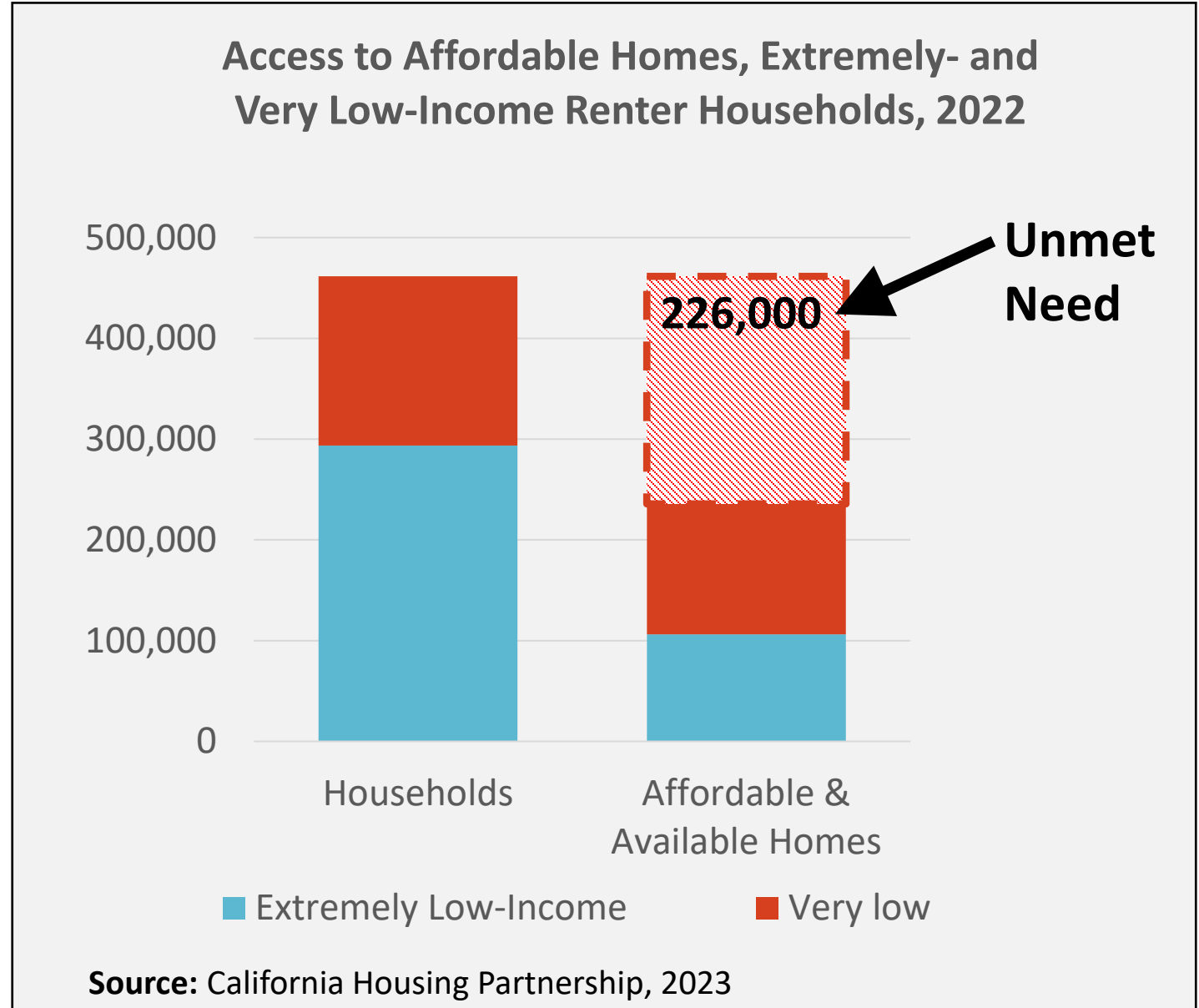
Source: US Federal Reserve Bank



Source: US Bureau of Labor Statistics

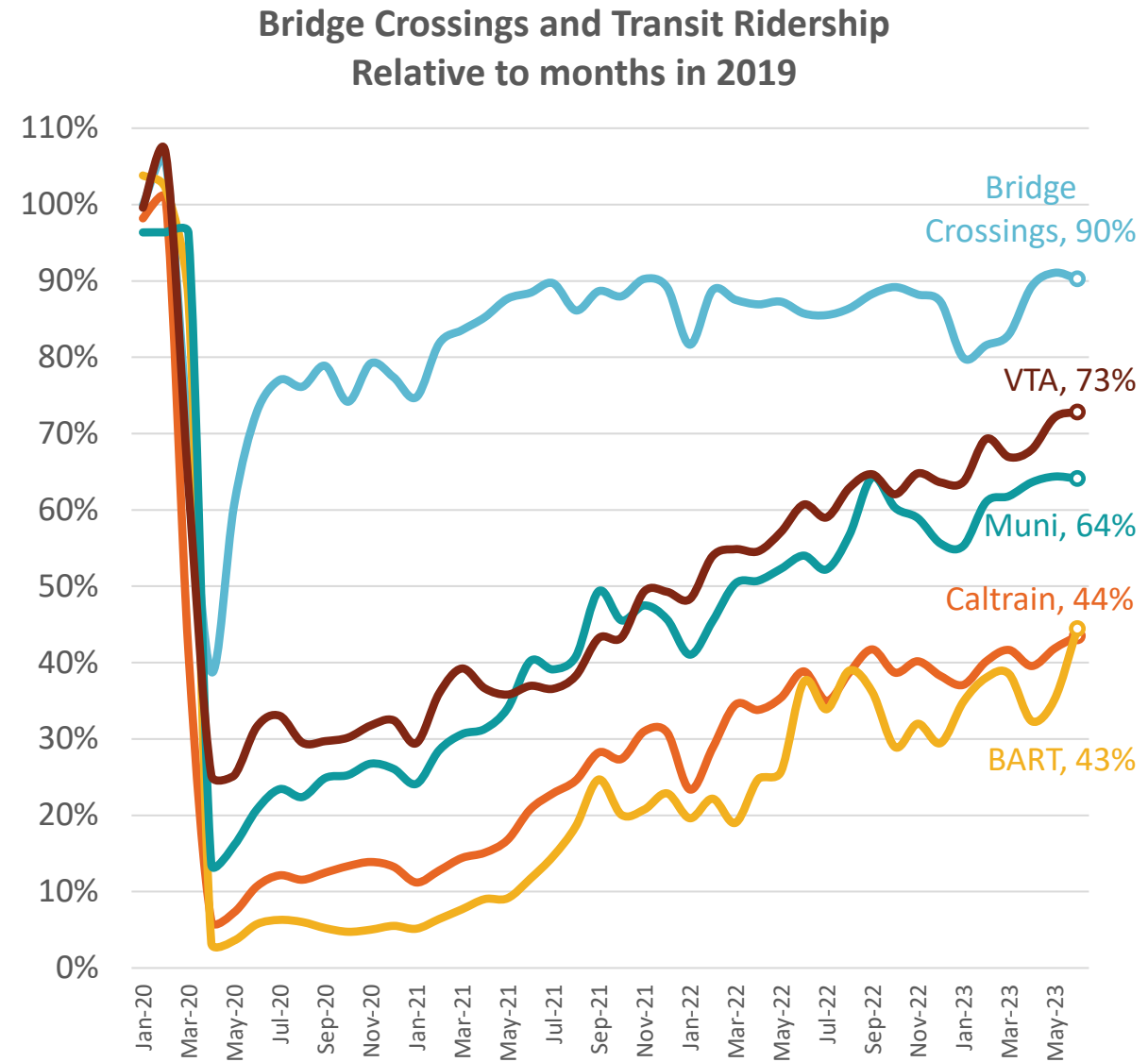
Plan Bay Area 2050+ Policy Context: Affordable Guiding Principle

- Less than half of low-income Bay Area renters have access to an affordable home.



Plan Bay Area 2050+ Policy Context: Connected Guiding Principle

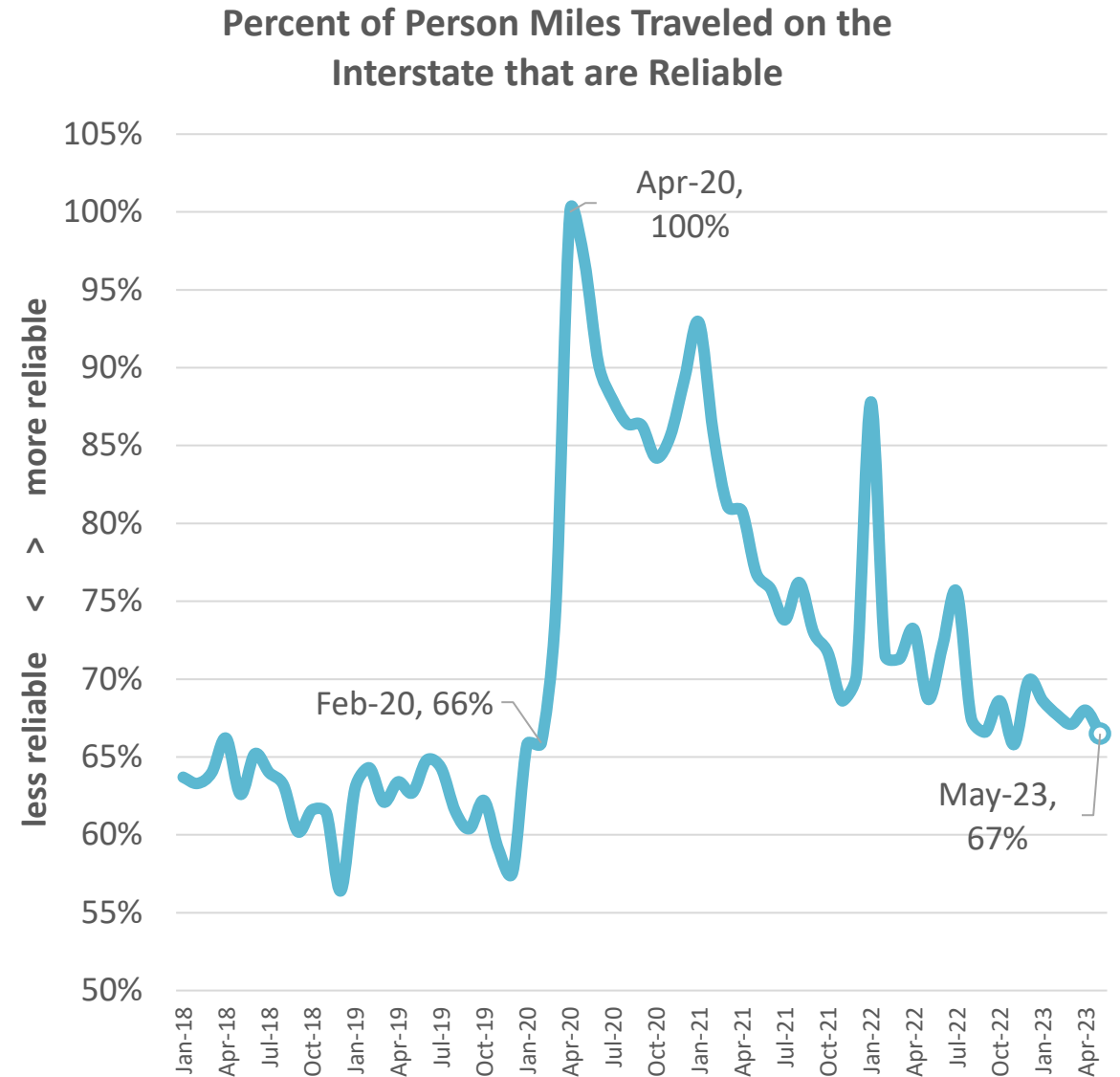
- Bridge crossings have largely rebounded but transit systems are grappling with a much tougher rebound.
- Funding hurdles to maintain transit operations pose significant barriers to achieving the vision of a Connected Bay Area.



Data source: National Transit Database (2019-2023), Metropolitan Transportation Commission

Plan Bay Area 2050+ Policy Context: Connected Guiding Principle

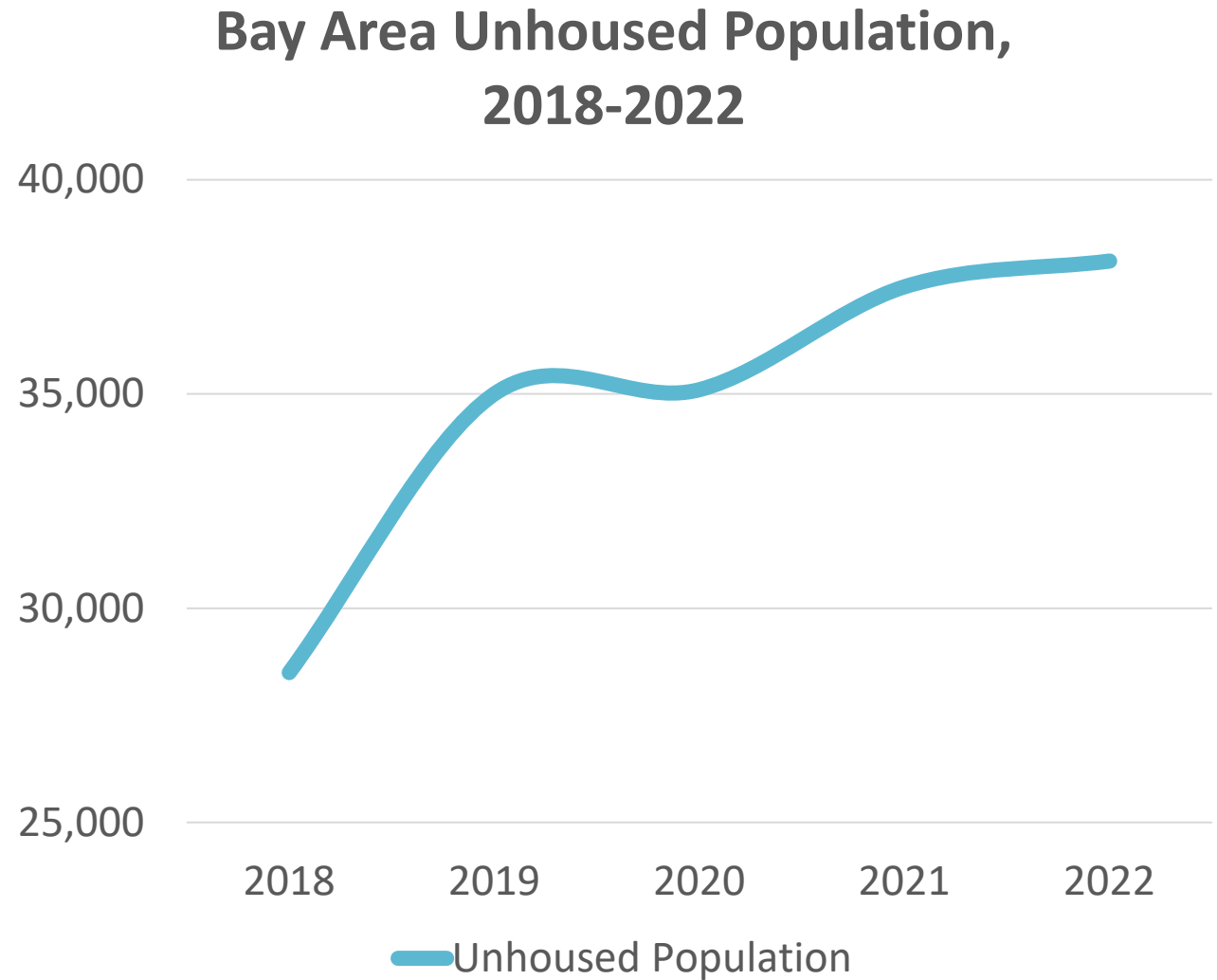
- Travel reliability on Bay Area freeways is a mixed bag. Before the pandemic, only 66% of person-miles traveled were reliable. A sharp spike during the pandemic has since receded back to pre-pandemic levels, as traffic (and associated congestion) return to “normal”.



Calculated using 99.97% of miles in Metropolitan Transportation Commission
Data source: NPMRDS INRIX (2018-2023)

Plan Bay Area 2050+ Policy Context: Diverse Guiding Principle

- The Bay Area's unhoused population grew by one-third during the pandemic.
- Despite making up 7% of the region's population, Black residents account for 28% of the unhoused population.

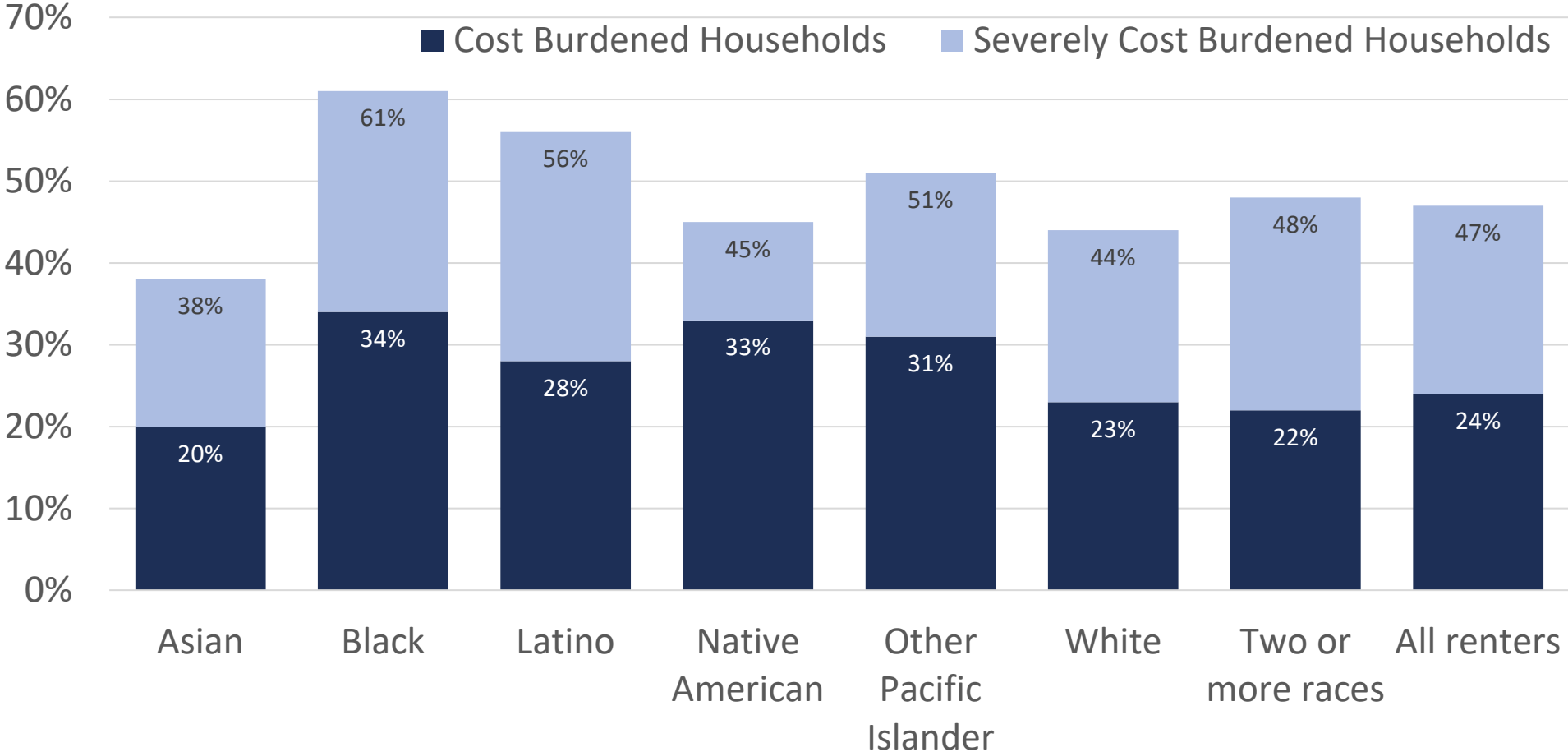


Source: HUD point in time counts, 2018-2022

Plan Bay Area 2050+ Policy Context: Diverse Guiding Principle

Renters of Color Continue to Face Higher Rent Burdens, Exacerbating Housing Vulnerability

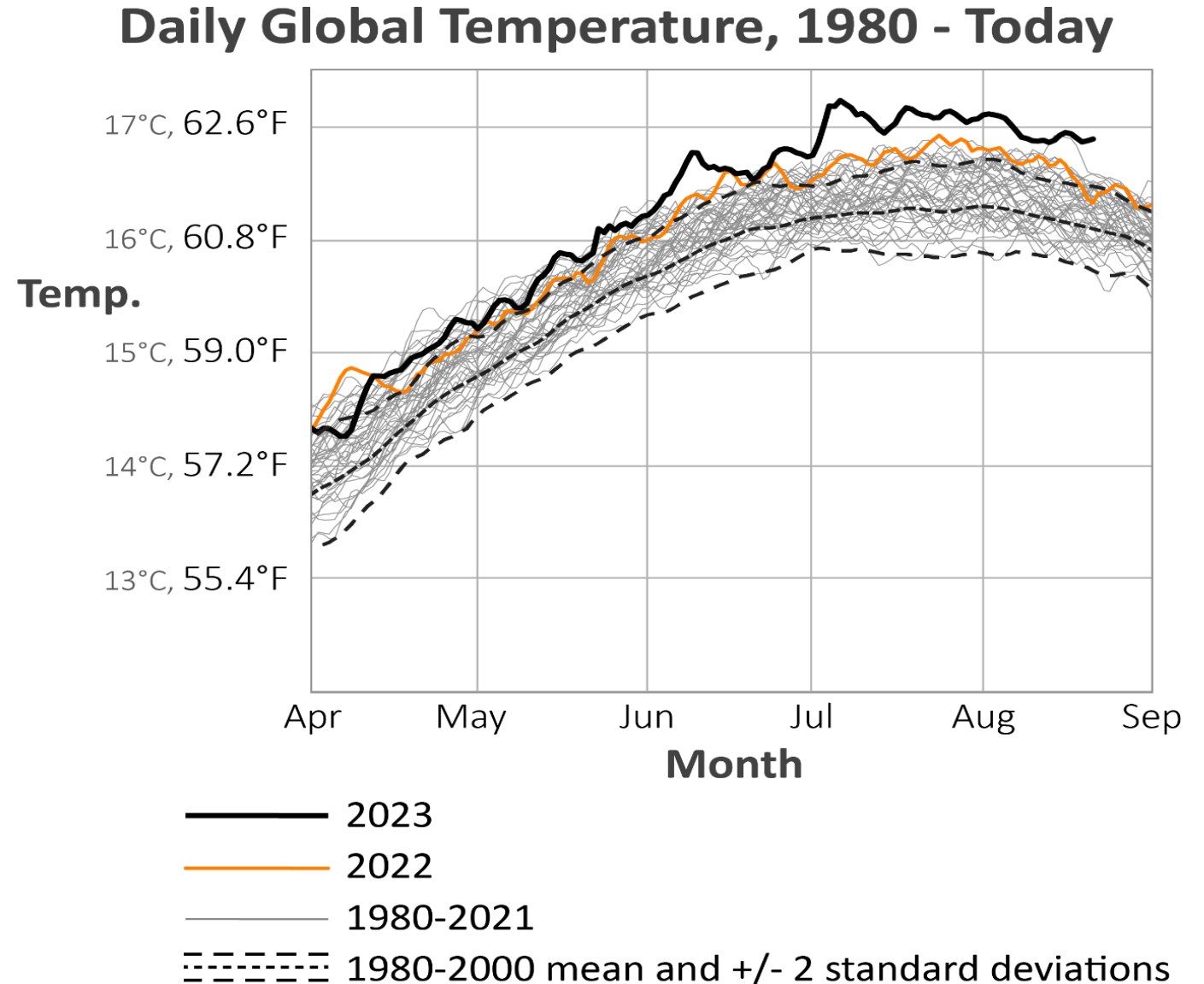
Cost Burdened Renter Households by Race and Ethnicity, Bay Area: 2021



Source: US Census, ACS 2017-2021; California Housing Partnership

Plan Bay Area 2050+ Policy Context: Healthy Guiding Principle

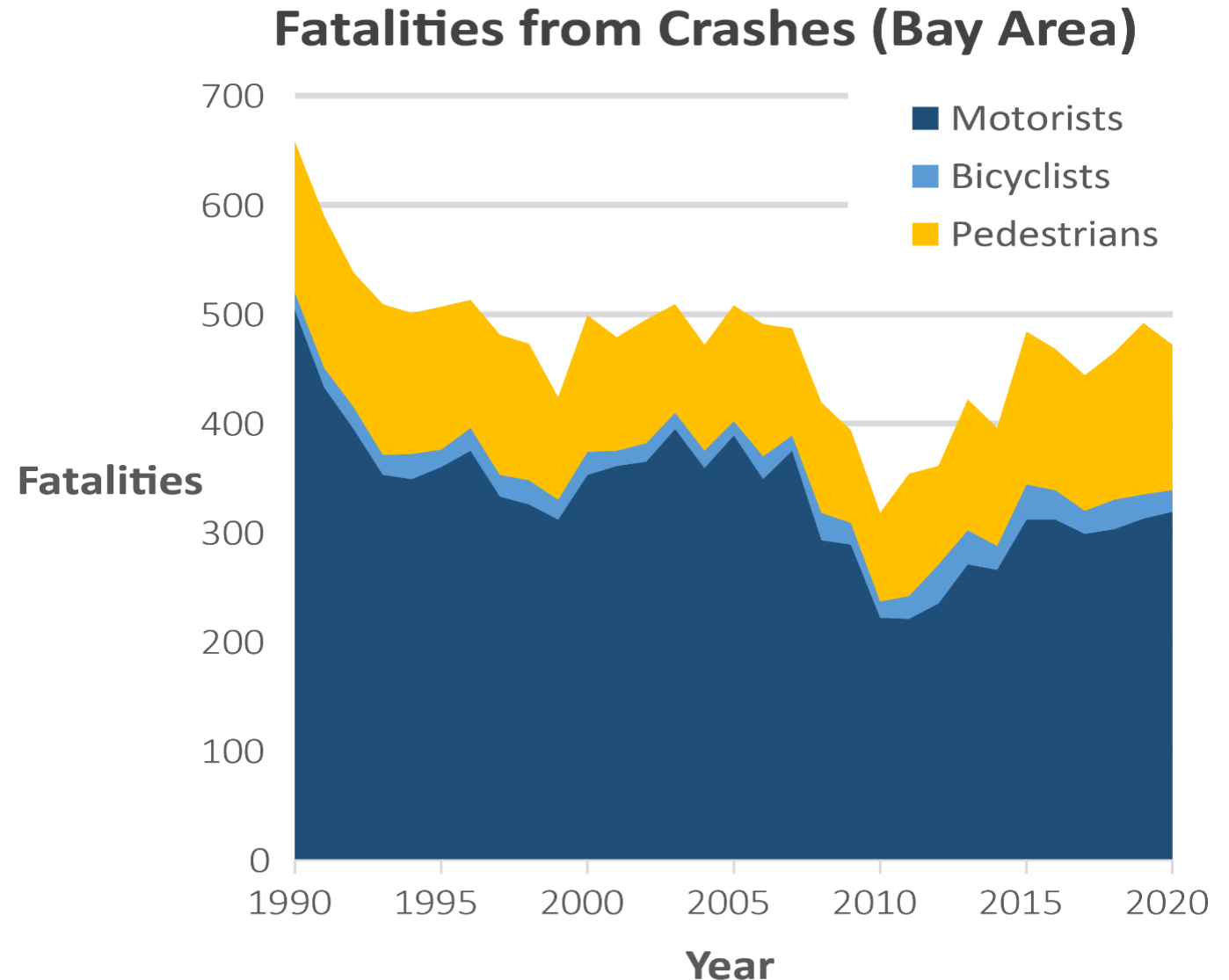
- Globally, summer 2023 was the warmest on record, with global emissions and global temperatures at all-time highs in human history.
- The Bay Area has experienced weather whiplash, with some of the driest and wettest years on record over the past decade.



Source: Climate Change Institute, University of Maine.

Plan Bay Area 2050+ Policy Context: Healthy Guiding Principle

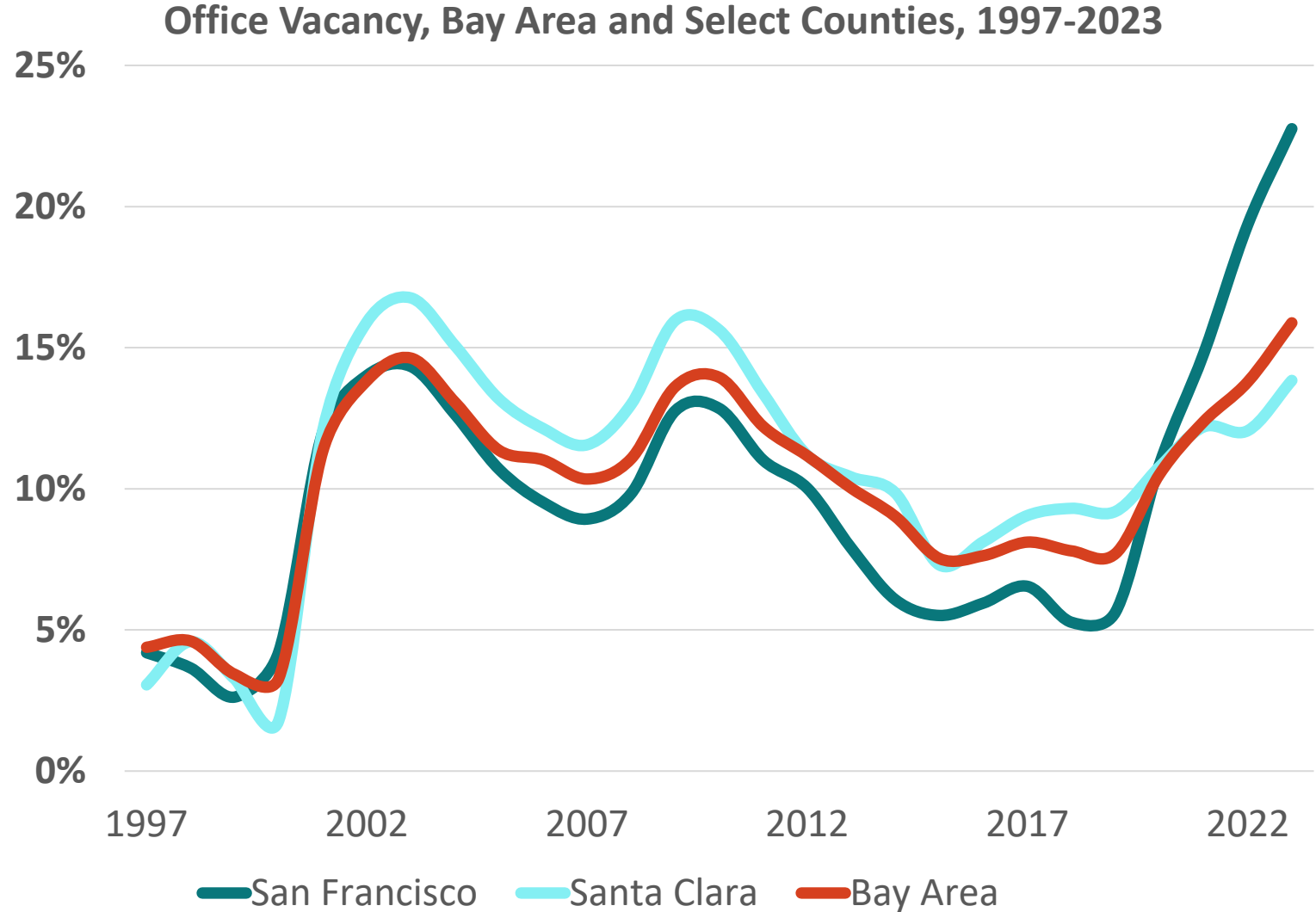
- After steady decreases in fatalities in the 1990s and 2000s, fatalities on Bay Area roadways increased over the last decade.
- Over the same period, pedestrians have suffered the greatest increase and represent 29% of fatalities since 2013.



Source: National Highway Safety Administration: Fatality Analysis Reporting System 1990-2020

Plan Bay Area 2050+ Policy Context: Vibrant Guiding Principle

- Office vacancies reached historic levels during the pandemic, with the most dramatic changes in San Francisco.

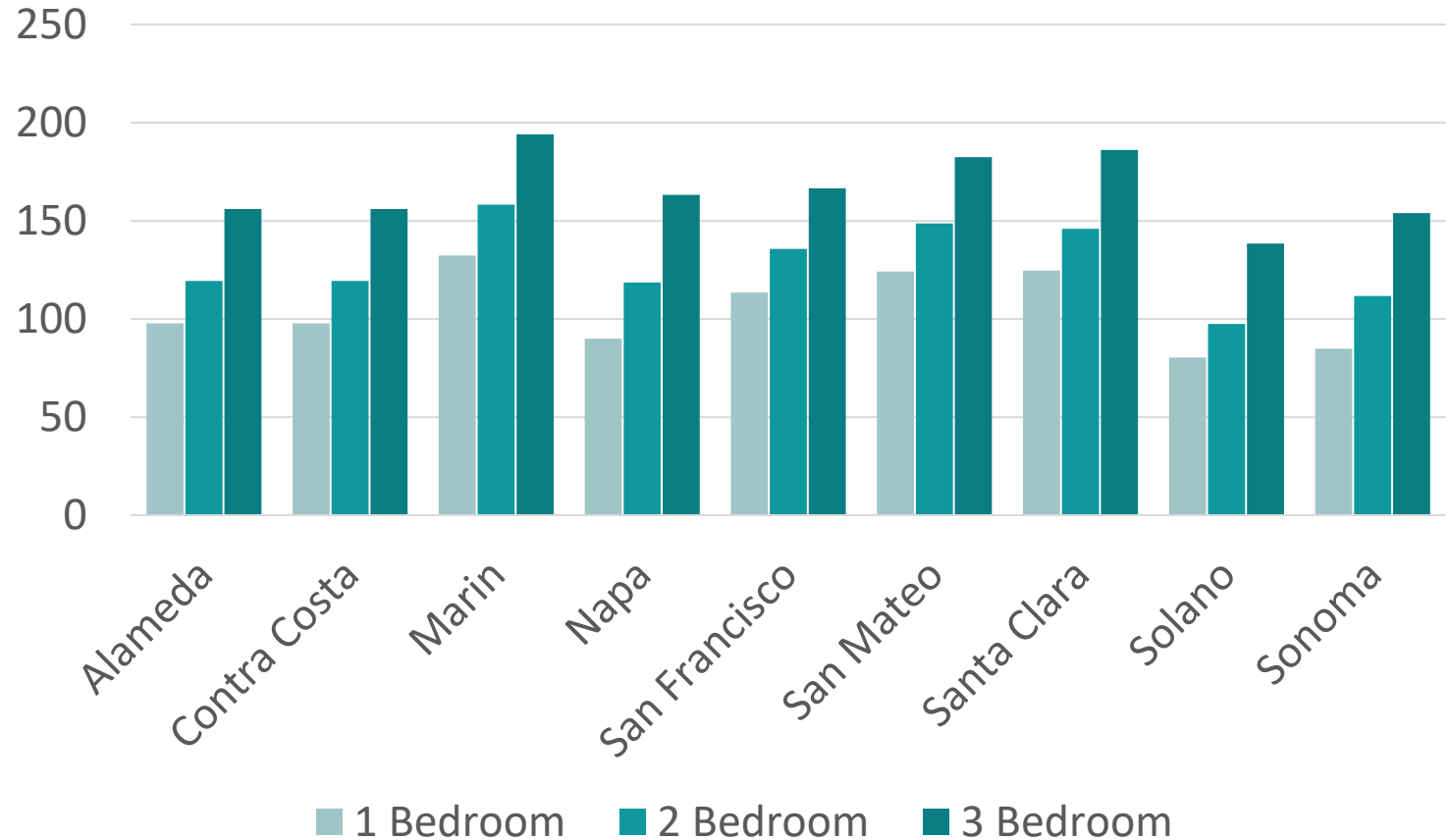


Source: CoStar

Plan Bay Area 2050+ Policy Context: Vibrant Guiding Principle

- In every Bay Area County, a resident making minimum wage needs to work 80+ hours a week to afford a 1-bedroom unit, or 100+ hours to afford a 3-bedroom unit.

Hours of work/week at minimum wage required to afford Fair Market Rent, Bay Area Counties, 2021



Source: US Census, ACS 2017-2021, National Low-Income Housing Coalition



PLAN BAY AREA 2050 +



ASSOCIATION OF BAY AREA GOVERNMENTS
METROPOLITAN TRANSPORTATION COMMISSION

Clarifying Questions?

*Plan Bay Area Overview and Plan Bay Area 2050+ Schedule,
Scope and Policy Context*

PLAN BAY AREA 2050+

A VISION FOR THE FUTURE

In 2021, the Metropolitan Transportation Commission and the Association of Bay Area Governments jointly approved the most comprehensive regional vision to date — a plan called Plan Bay Area 2050 — with the goal of ensuring that by 2050 the Bay Area is affordable, connected, diverse, healthy and vibrant for all. At the heart of the plan are 35 strategies related to housing, the economy, transportation and the environment. The strategies collectively seek to make the region more resilient and

equitable for future generations by addressing today's challenges like housing affordability, economic uncertainty, mobility and connectivity, and climate change.

The plan was shaped by and responds to the challenges introduced by the COVID-19 pandemic and a growing sense of urgency to address climate change impacts and overcome generations of racial inequities. These challenges continue to affect the Bay Area as we look to the future. We are only just beginning to understand the potential long-term impacts of the last three years.

WHAT'S NEXT?

This summer, policymakers kicked off an update to Plan Bay Area. This effort — called **Plan Bay Area 2050+** — is an opportunity to refine the plan's strategies to integrate the lessons of the last three years. The pandemic changed overnight how Bay Area residents live, work and travel. A first step in updating the plan is to better understand what has changed for you as the

WHAT DOES THE "NEW NORMAL" MEAN TO YOU?

Using a sticky note, please tell us how the "new normal" is shaping your life in terms of housing, the economy, transportation and the environment. If nothing has changed for you, tell us about your concerns for the future as they relate to housing, the economy, transportation and the environment.

Housing

Economy

Transportation

Environment

PLAN BAY AREA 2050+



ASSOCIATION OF BAY AREA GOVERNMENTS
METROPOLITAN TRANSPORTATION COMMISSION

Time to join your breakout group!



ASSOCIATION OF BAY AREA GOVERNMENTS
METROPOLITAN TRANSPORTATION COMMISSION

facebook.com/MTCBATA

@MTCBATA

@mtcbata

#PlanBayArea

Breakout Activity #1 (20 minutes)

Goal 1

- Hear more about the “new normal” from your organizational perspective

Goal 2

- Understand how organizational priorities and concerns may have shifted

	HOUSING	ECONOMY	TRANSPORTATION	ENVIRONMENT
At the regional level				
In your communities (specify which community)				
Lessons learned or case studies				





PLAN BAY AREA 2050+



ASSOCIATION OF BAY AREA GOVERNMENTS
METROPOLITAN TRANSPORTATION COMMISSION

Report Back *(5 minutes)*

The “New Normal” | Shifts in Priorities



PLAN BAY AREA 2050+



ASSOCIATION OF BAY AREA GOVERNMENTS
METROPOLITAN TRANSPORTATION COMMISSION

Plan Bay Area 2050+: Proposed Draft Blueprint Strategy Refinements

... And Where We are Going

*Transportation Element: Adam Noelting, MTC/ABAG
Housing and Economy Elements: Mark Shorett, MTC/ABAG
Environment Element: Michael Germeraad, MTC/ABAG*



Maintain and Optimize the Existing System

T1* Restore, Operate and Maintain the Existing System.

T2 Support Community-Led Transportation Enhancements in Equity Priority Communities.

T3* Enable a Seamless Mobility Experience.

T4* Reform Regional Transit Fare Policy.

T5 Implement Per-Mile Tolling on Congested Freeways with Transit Alternatives.

T6 Improve Interchanges and Address Highway Bottlenecks.

T7 Advance Other Regional Programs and Local Priorities.



Create Healthy and Safe Streets

T8 Advance Other Regional Programs and Local Priorities.

T9 Advance Regional Vision Zero Policy through Street Design and Reduced Speeds.



Build a Next-Generation Transit Network

T10* Enhance Local Transit Frequency, Capacity and Reliability.

T11* Expand and Modernize the Regional Rail Network.

T12* Build an Integrated Regional Express Lane and Express Bus Network.

**For the Plan Bay Area 2050+ update, the six marked strategies will be revised through the parallel Transit 2050+ process.*

Staff from the Transit 2050+ project team are available at this workshop to take input and answer questions.

Transportation Strategies: Implementation Efforts



Photo: Karl Nielsen



Photo: MTC photo library



Photo: Ron Purdy



Photo: Noah Berger

Launched in March 2021, the **Regional Active Transportation Plan** supports Plan Bay Area strategies T8 and T9. In March 2022, MTC endorsed the **Complete Streets Policy**, emphasizing safety and **All Ages and Abilities** design requirements on the **Active Transportation Network**.

Initiated in 2022, the **Next Generation Freeways Study**, in line with Plan Bay Area Strategy T5, engaged stakeholders, analyzed data, defined goals and operational needs, and explored fair freeway pricing options.

Express Lanes START, Clipper® START and Clipper® BayPass were all launched to help operationalize equitable payment pathways through discounted tolls and transit fares for low-income residents, as well as a pilot all-agency transit pass to select university students and affordable housing residents.

A Regional Network Management Framework was approved in February 2023 to help achieve near-term and longer-range transit mobility goals.

Transportation Strategies: Proposed Refinements



Expand strategies to optimize the existing system

Expand pricing strategies to weave together per-mile freeway tolling, downtown San Francisco cordon zones, and expanded parking charges. Consider augmenting with a regional version of a Road User Charge (RUC).

Ensure equitable pricing strategies

Refine per-mile freeway tolling strategy with expanded equity considerations in alignment with findings from Next Generation Bay Area Freeways Study.

Encourage active transportation for All Ages and Abilities

Focus on creating safe active transportation facilities suitable for all ages and abilities. Give priority to the Regional Active Transportation Network and the High Injury Network.



Photo: rawpixel

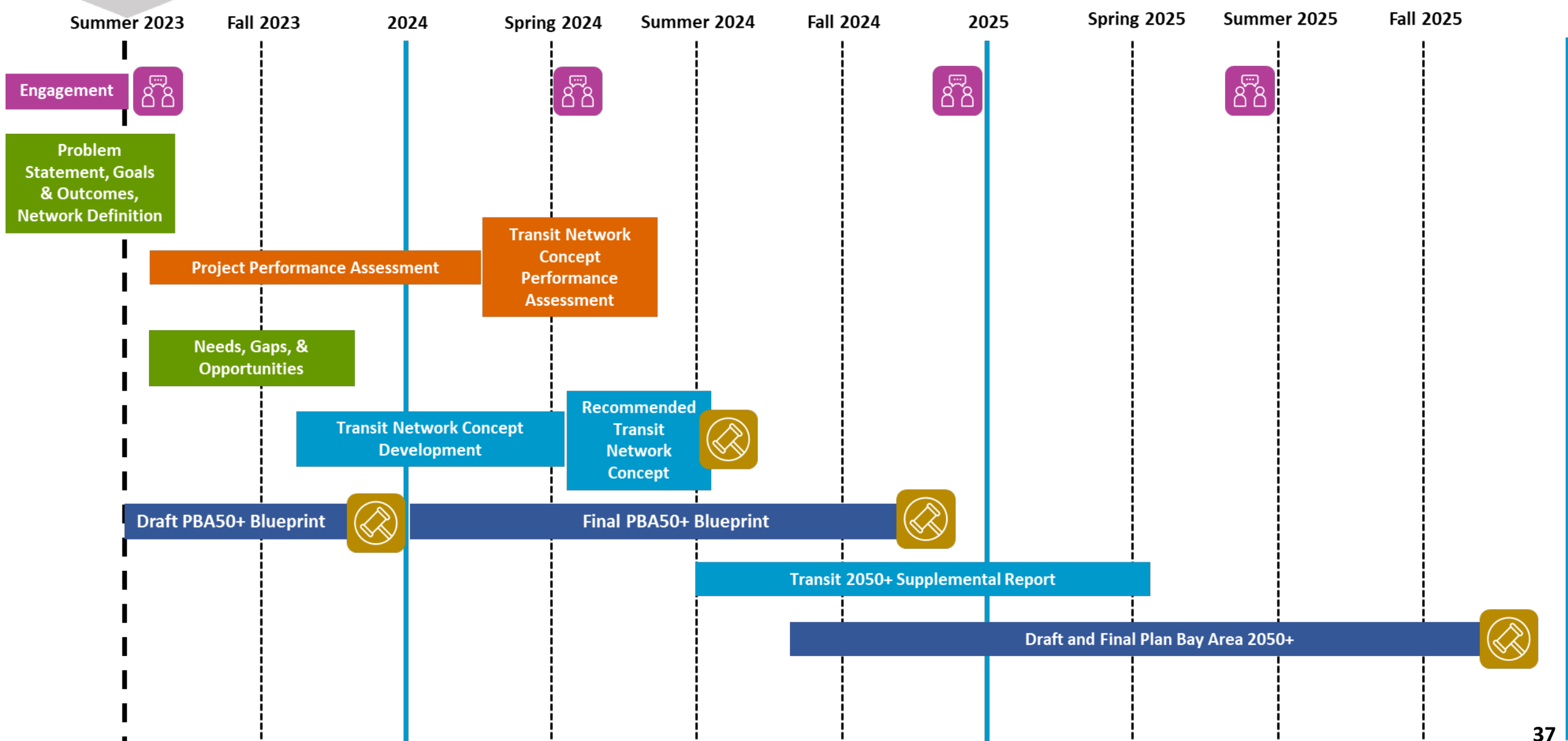


Photo: San Francisco Bike Coalition

Transit 2050+: Scope and Schedule



We are here



Transit 2050+: Primary Focus Areas



Develop an integrated, well-connected network

Improve access, particularly for equity priority and transit-reliant populations and improve connections between different modes and operators.

Recover and grow ridership

Focus on investments that increase the share of people who use transit for different types of trips.

Improve reliability and average travel speeds

Focus on investments that will enhance travel speeds and make transit service more reliable.

Reduce barriers to using transit

Address safety and security at transit stops, stations and vehicles; the lack of efficient coordination of services for older adults, people with disabilities, and those with lower incomes; long and unpredictable wait or transfer times; and real-time transit vehicle arrival information, among other areas.



Photo: Noah Berger

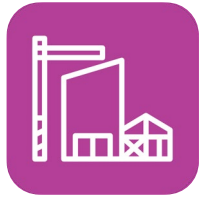


Photo: Noah Berger



Protect & Preserve Affordable Housing

- H1. Further Strengthen Renter Protections Beyond State Law
 - H2. Preserve Existing Affordable Housing
-



Spur Housing Production for Residents of All Income Levels

- H3. Allow a Greater Mix of Housing Densities and Types in Growth Geographies
 - H4. Build Adequate Affordable Housing to Ensure Homes for All
 - H5. Integrate Affordable Housing into All Major Housing Projects
 - H6. Transform Aging Malls and Office Parks into Neighborhoods
-



Create Inclusive Communities

- H7. Provide Targeted Mortgage, Rental and Small Business Assistance to Equity Priority Communities
- H8. Accelerate Reuse of Public and Community-Owned Land for Mixed-Income Housing and Essential Services



Source: BAHFA



Source: MTC Photo Library



Source: KTGy

The Bay Area Housing Finance Authority (BAHFA) was launched in 2022 to advance protection, preservation, and production strategies. Already, BAHFA has pursued innovative pilot programs that implement Plan Bay Area 2050, including the Doorway Housing Portal and the Preservation, Priority Sites, and Anti-Displacement Pilot.

The Regional Housing Technical Assistance (RHTA) and Priority Development Area (PDA) programs are delivering \$30 million in funding to local governments to adopt locally-tailored approaches to implementing the suite of Plan Bay Area 2050 Housing Strategies; a revised **Transit-Oriented Communities Policy** will support a greater mix of housing and commercial densities near transit.

Work Groups, guidance documents, and direct funding from a Priority Sites Pilot will enable region-wide implementation and peer-to-peer learning around the **transformation of public land and aging malls and office parks**. Local policy innovation is reflected in Housing Element programs and policies.

Housing Strategies: Proposed Refinements



Integrate new Protection, Preservation, & Production policies and programs

Refine strategies to reflect key policies and programs established following Plan Bay Area 2050, including the Transit Oriented Communities (TOC) Policy and locally-identified Priority Sites, such as aging malls and public land, envisioned for reuse as neighborhoods affordable to households of all income levels.



Photo: MTC Photo Library

Address rising development costs

Revise assumptions and explore additional measures, such as innovative construction and cross-subsidization, to address escalating development costs, drawing on the expertise of BAHFA

Respond to displacement risks

Update renter protections to address potential impact of inflation on the housing security of region's most vulnerable households; increase provision of supportive housing to meet current need.

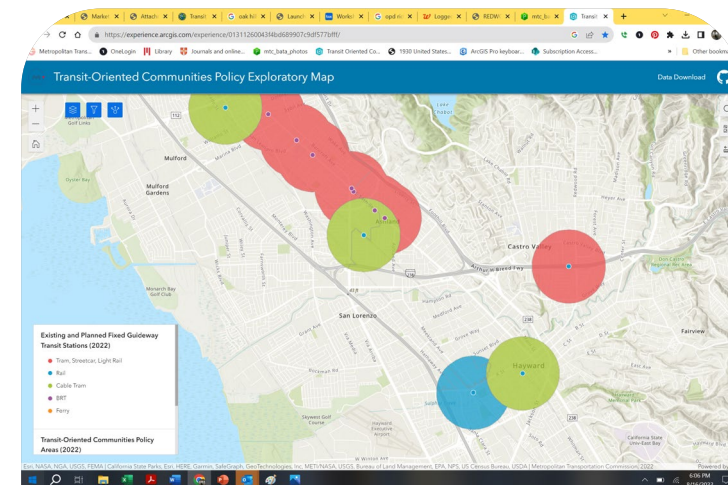


Photo: MTC Website

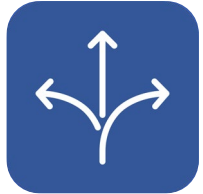


Improve Economic Mobility

EC1. Implement a Statewide Universal Basic Income

EC2. Expand Job Training and Incubator Programs

EC3. Invest in High-Speed Internet in Underserved Low-Income Communities



Shift the Location of Jobs

EC4. Allow Greater Commercial Densities in Growth Geographies

EC5. Provide Incentives to Employers to Shift Jobs to Housing-Rich Areas Well Served by Transit

EC6. Retain and Invest in Key Industrial Lands



Source: MTC Photo Library



Source: MTC Photo Library



Source: MTC Photo Library

The **Priority Production Areas (PPA) Pilot Program** advances the Plan's industrial land preservation strategies while stimulating middle-wage job creation. The Pilot will update development standards and identify infrastructure needs and financing strategies for 26 PPAs to facilitate middle-wage job creation and sustain industries essential to the functioning of the regional economy.

MTC/ABAG are partnering to expand resources for implementing economic mobility strategies, including a new regional **Community Economic Resilience Fund**. Additional efforts include a Manufacturing, Industrial Lands and Logistics Strategy and a potential regional Comprehensive Economic Development Strategy update.

Priority Development Area (PDA) grants are helping communities respond to the impact of the pandemic by crafting plans for full-service downtowns and main streets that support working, living, and recreating near public transit, and incorporate policies to redress historic inequities.



Prioritize job growth and activity in regional downtowns and main streets

Refine job location strategies to support the recovery of downtowns and commercial areas impacted by the pandemic; promote a broader range of uses in these areas to increase activity and speed transit recovery.



Photo: MTC Photo Library

Promote middle-wage in-person jobs, near transit

Identify ways to better align the location of middle-wage jobs that involve in-person work with the transit network to support system recovery and expand access to opportunity.



Photo: MTC Photo Library



Reduce Risks from Hazards

EN1 Adapt to Sea Level Rise

EN2 Provide Means-Based Financial Support for Seismic & Wildfire Home Retrofits

EN3 Fund Energy Decarbonization and Water Efficiency Upgrades in All Buildings



Expand Access to Parks and Open Space

EN4 Maintain Urban Growth Boundaries

EN5 Protect and Manage High-Value Conservation Lands

EN6 Expand Urban Greening Initiatives with Improved Urban Parks, Trails, and Tree Canopy



Reduce Climate Emissions

EN7 Expand Commute Trip Reduction Programs at Major Employers

EN8 Expand Clean Vehicle Initiatives

EN9 Expand Transportation Demand Management Initiatives

Environment Strategies: Implementation Efforts

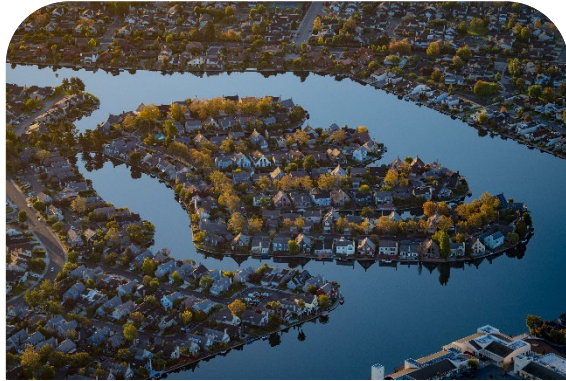


Photo: Karl Nielsen

The **Sea Level Rise Adaptation Funding & Investment Framework** cataloged planned and conceptual sea level rise projects and developed a regional cost estimate for shoreline adaptation. The data will be used as baseline information in Plan Bay Area 2050+.



Photo: BayREN

BayREN's 2024-2031 Strategic Business Plan will bolster energy efficiency and electrification efforts with expanded initiatives with 60% of the funds (\$102 million) targeted toward equity programs. The Plan Bay Area building strategies will integrate BayREN's program growth.



Photo: Noah Berger

The **Priority Conservation Area (PCA) Refresh** will recommend changes to the conservation planning framework to make it more data-driven and science-based and incorporate a wider range of policy concerns with relevant findings integrated in Plan Bay Area 2050+.



Photo: Joey Kotfica

The **Climate Initiatives Program** has provided grants for parking, transportation demand management, mobility hubs, and electric vehicles, with forthcoming grants for charging and electrification infrastructure. Lessons learned from implementation will inform updates to the plan's climate strategies.

Environment Strategies: Proposed Refinements



Prioritize adaptation projects

Explore ways to elevate areas in the region in need of near-term sea level rise adaptation by tiering projects.

Modernize buildings for a new climate

Consider how to bring buildings built before prior codes into the 21st century to meet and react to a changing climate.

Target conservation and urban greening needs

Integrate conservation priorities from the Priority Conservation Area refresh and expand urban greening to include urban parks, green infrastructure, tree canopy, and access to nature.

Expand strategies to reduce auto-trips

Bolster programs that support alternatives to single-occupancy vehicles, including via e-bike, bike-share, ride-share, mobility hubs, or other innovative pilots.



Photo: Karl Nielsen, Fagan Marsh State Marine Park



Photo: Karl Nielsen, Milpitas



PLAN BAY AREA 2050+



Q & A *(10 minutes)*

Plan Bay Area 2050+: Strategies, Implementation and Proposed Refinements



PLAN BAY AREA 2050+



ASSOCIATION OF BAY AREA GOVERNMENTS
METROPOLITAN TRANSPORTATION COMMISSION

Time to join your breakout
group!

Breakout Activity #2 (35 minutes)

Goal 1

- Gather detailed feedback on proposed strategy refinements

Goal 2

- Prioritize which strategy refinements are most important to advance



PLAN BAY AREA 2050+



ASSOCIATION OF BAY AREA GOVERNMENTS
METROPOLITAN TRANSPORTATION COMMISSION

Report Back *(5 minutes)*

Proposed Draft Blueprint Strategy Refinements

CHILD SUPPORT WORKS FOR YOU

FINANCIAL BENEFITS

CHILD SUPPORT IS COMPLICATED, STRESSFUL, AND CONFUSING. WE HELP PARENTS UNDERSTAND THE PROCESS SO THEY KNOW THEIR RIGHTS AND OPTIONS FOR MAKING AND RECEIVING SUPPORT PAYMENTS.

- Help with:
- Establishing child support and medical support orders
 - Modifying and enforcing court-ordered support orders
 - Access to quality, confidential resources only available to government entities
 - Accurate access to employment and income information
 - Monitoring payments and interest

SUPPORT CAN HELP YOU PAY FOR:

- COSTS
- EDUCATION
- DAY CARE
- DENTAL EXPENSES
- EXTRA CURRICULAR ACTIVITIES

YOUR CHILD SUPPORT AMOUNT

AVERAGE GROSS INCOME



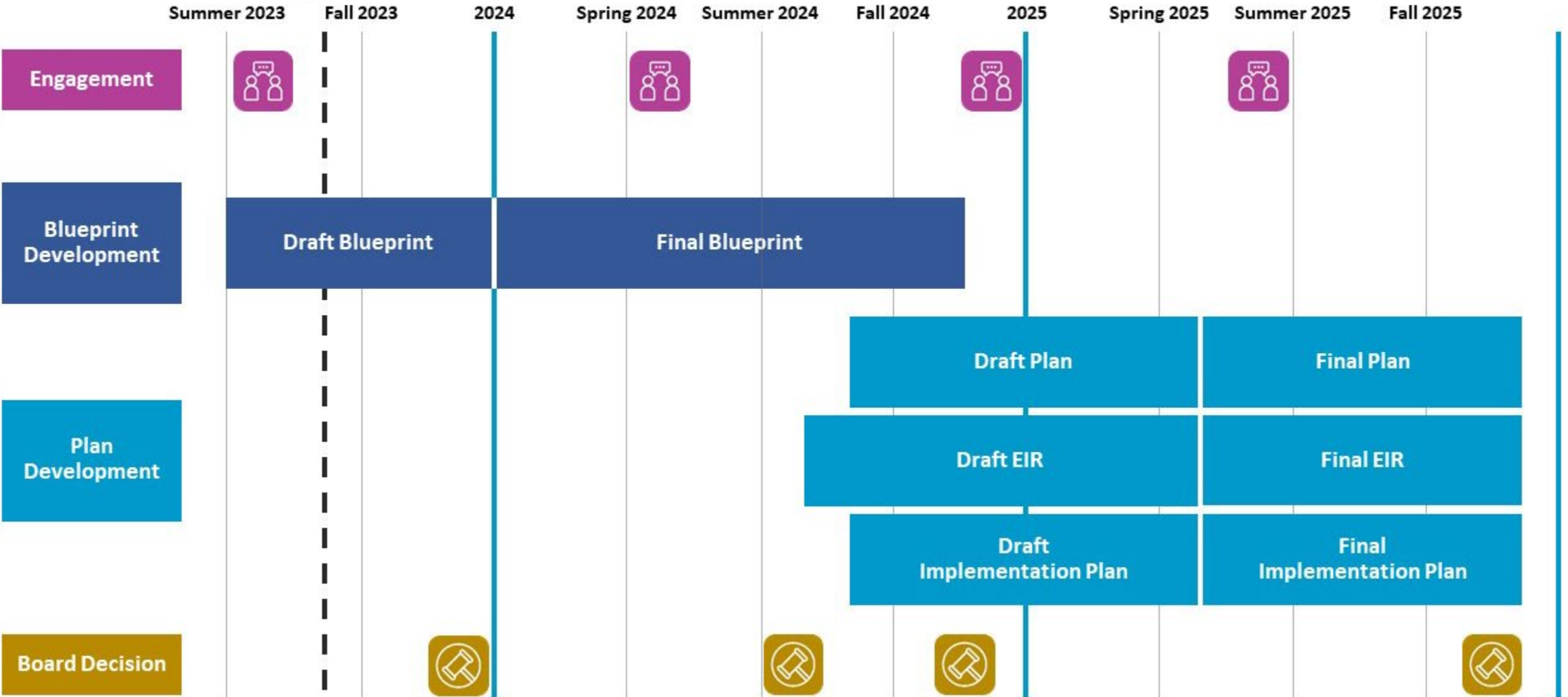


Next Steps

What's Coming Up & Other Opportunities for Input

Plan Bay Area 2050+: Schedule

We are here



Plan Bay Area 2050+: Key Next Steps in 2023

- Staff will provide **updates to MTC/ABAG committees** on a variety of topics over the remainder of 2023, including:
 - Round 1 Public Engagement Findings; Draft Core Planning Assumptions; Anticipated Draft Blueprint Refinements
(November 2023 – Information)
 - Draft Blueprint Strategy Adoption
(December 2023 – Action)



Photo: Noah Berger

PLAN BAY AREA 2050+



ASSOCIATION OF BAY AREA GOVERNMENTS
METROPOLITAN TRANSPORTATION COMMISSION

Remaining Round 1 Engagement Opportunities

Office Hours

Schedule direct meetings with MTC/ABAG staff in **September** to further discuss the Draft Blueprint.

Webinar

Learn more about the key technical and planning assumptions that will inform the Draft Blueprint at a webinar on **October 19.**

Comments

Submit written comments by email to **info@planbayarea.org**, or by mail to **MTC Public Information Office**
375 Beale Street, Suite 800
San Francisco, CA 94105.

Visit the Partner Engagement page on planbayarea.org to learn more.



PLAN BAY AREA 2050 +



ASSOCIATION OF BAY AREA GOVERNMENTS
METROPOLITAN TRANSPORTATION COMMISSION

Thank you!

Chirag Rabari – crabari@bayareametro.gov

Plan Bay Area 2050+ Project Manager, MTC/ABAG

Leslie Lara-Enríquez - llara-enriquez@bayareametro.gov

Assistant Director of Public Engagement, MTC/ABAG